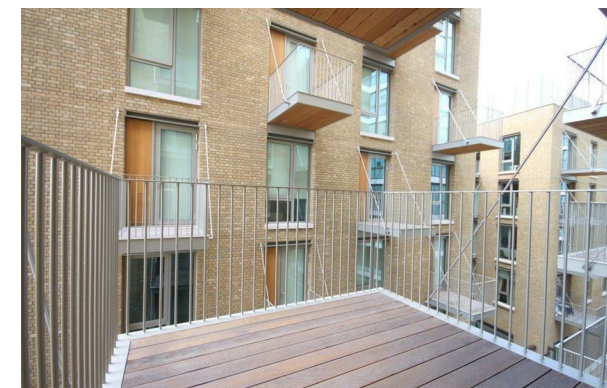




CHASE APARTMENTS
LONDON



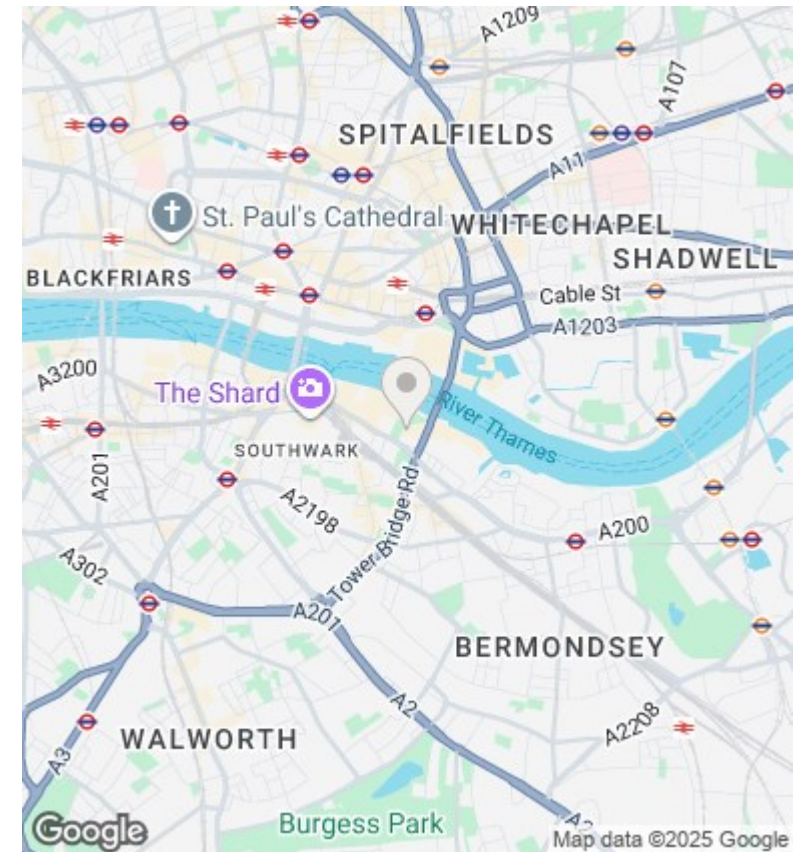
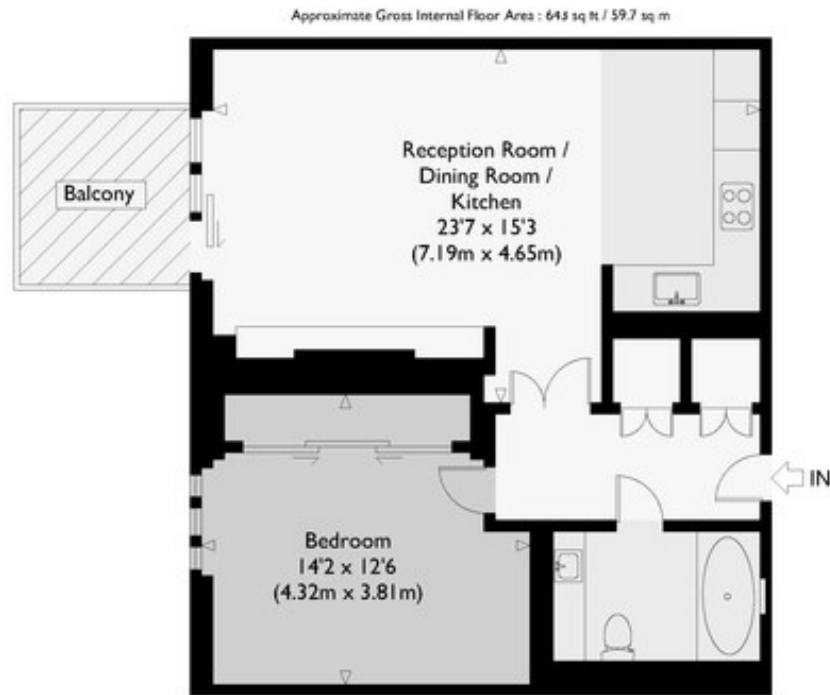
Godwin House, One Tower Bridge, Still Walk SE1 2RA

£3,000 Per Month

- 24/7 concierge
- Virtual golf course
- Under floor heating
- Fully Furnished
- Gym and spa
- Business Meeting rooms
- Electric blinds
- Swimming pool
- Business lounge
- Private balcony

Grosvenor Waterside, 32 Gatliff Road, Belgravia, London, SW1W 8QN
02077225022

<http://www.chaseapartments.com/>



Viewings

Viewings by arrangement only.
Call 02077225022 to make an appointment.

Council Tax Band

D

EPC Rating:

B

Energy Efficiency Rating		
	Current	Potential
Very energy efficient - lower running costs		
(92 plus) A		
(81-91) B	89	89
(69-80) C		
(55-68) D		
(39-54) E		
(21-38) F		
(1-20) G		
Not energy efficient - higher running costs		
England & Wales	EU Directive 2002/91/EC	